



**Paragon Machine Technology**  
Chappell Hill, TX

PH. 979-836-7300 / FAX. 979-836-7308 / EMAIL. sales@pmttx.com

# SPECIAL DESIGN WORKSHEET

## BORING BAR HEADS

P.M.T. P/N:

(FOR P.M.T. USE ONLY)

CUSTOMER:

DISTRIBUTOR:

### SPECIFY PARAMETERS

(SEE ILLUSTRATION)

**NOTE: SUBJECT TO DESIGN REVIEW FOR MFG. & FUNCTION.**  
**SOME REQUESTED PARAMETER COMBINATIONS MAY NOT BE**  
**GEOMETRICALLY / FUNCTIONALLY COMPATIBLE.**

BAR COUPLING STYLE:

"A"  "B"

HAND:

LEFT  RIGHT

LEAD ANGLE:

-A1°:

OR

+A1°:

CUT DIRECTION (FORWARD / BACK-BORE):

FWD  BK-BR

INSERT GEOMETRY:

INSERT PROJECTION:

F:

OR

Ar:

ØD1 (COUPLING Ø):

OAL (USE "L1" IF BACK-BORING STYLE):

(\*P.M.T. STD IF UNSPECIFIED; SPL REQ. @ EXTRA COST)

L1:

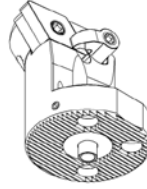
ØD2 (MINIMUM BORE):

INSERT CLAMP STYLE:

"A"  "B"  "C"

OTHER SPECIAL REQUIREMENTS:

### BAR COUPLING STYLES

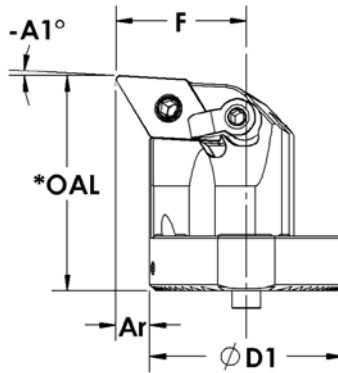


A. SERRATED STYLE  
(ØD1 = MM)

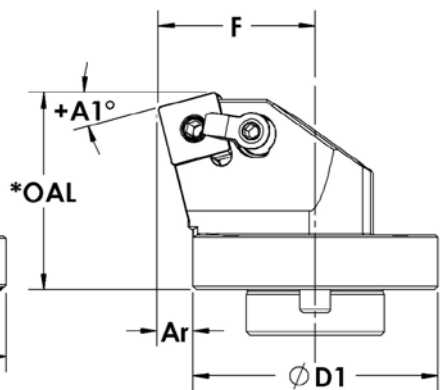


B. LOCATING PIN STYLE  
(ØD1 = INCH)

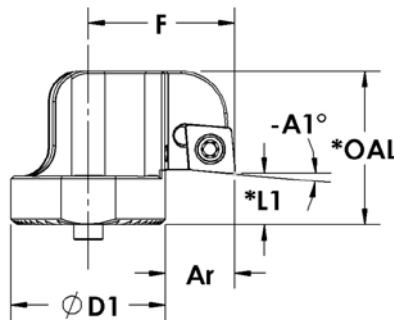
### DIMENSIONAL PARAMETERS



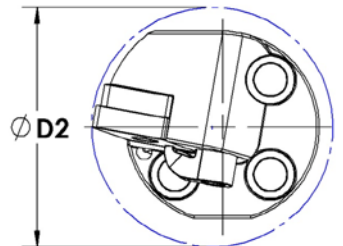
NEGATIVE LEAD ANGLE  
(R.H., SERRATED STYLE SHOWN)



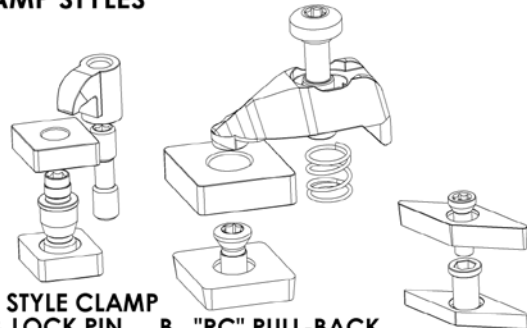
POSITIVE LEAD ANGLE  
(R.H., LOC. PIN STYLE SHOWN)



BACK-BORING  
(L.H., SERRATED STYLE SHOWN)



### INSERT CLAMP STYLES



A. "C" STYLE CLAMP  
& LOCK PIN

B. "RC" PULL-BACK  
STYLE CLAMP

C. SCREW CLAMP  
(POS. RAKE INSTS)

APPROVAL SIGNATURE: \_\_\_\_\_

DATE: \_\_\_\_\_